

ASHRIDGE  
WEDDINGS

# WEDDINGS AT ASHRIDGE HOUSE

*A perfect setting for your perfect day*



# Contents

4	Welcome to Ashridge House
6	An idyllic setting
10	History around every corner
16	Rooms built to impress
22	Grounds & gardens
25	A meal to remember
28	Exceptional service
30	Relax & unwind
32	Personalised packages
35	Come and see for yourself
36	Countdown to your perfect day
38	Find us



# Welcome to Ashridge House

Many congratulations on your engagement. Planning a wedding is a hugely exciting time with many decisions to be made to bring your perfect day to life. We understand that choosing the right venue is high on the list of priorities for many couples, so we are absolutely thrilled to be considered. We hope that this brochure gives you a flavour of what Ashridge House can offer and is the start of an amazing journey that sees us working together to plan the wedding of your dreams. We look forward to welcoming you soon so you can see for yourself just how special Ashridge House really is.



# An idyllic setting

Majestically nestled in National Trust woodland in Hertfordshire's rolling Chiltern Hills, and surrounded by 190 acres of stunning gardens, Ashridge House is the proverbial jewel in the Estate's crown.

The grandeur of our Grade 1 listed country mansion is undeniable, but the house also has a softer, more playful side than its turreted façade might lead you to believe. Built as a family home between 1808 and 1814, the personalities and eccentricities of its various owners can be seen at every turn and will be sure to delight your guests.

Whatever the season, your photographer will be spoilt for choice by the endless settings in which to capture the memories you will treasure for many years to come. You can be assured that every last detail will be attended to, allowing you to relax and enjoy the breath taking venue on the biggest day of your lives.











# History around every corner

Our spectacular neo-Gothic country house has a fascinating history spanning 730 years. It has been a monastery, a family home, a wartime hospital, a finishing school and a world-renowned business school.

In 1283 a Benedictine monastery was built on the site; it thrived as a place of pilgrimage until the Dissolution, when it became one of King Henry VIII's favourite hunting lodges and a residence for his children. At one time, Prince Edward, Princess Mary and Princess Elizabeth were all at the house together—quite the gathering of future kings and queens of England. The formidable Egerton family took ownership in 1604, retaining it until after the First World War. Ashridge then became The Bonar Law College, counting Winston Churchill among its board members, before becoming the Ashridge Management College in 1959.

When the doors of the new house opened in 1814, the owners quickly got to work cementing their reputation as perfect hosts by throwing lavish parties. British and foreign royalty, prime ministers and the most famous writers and artists of the day were all entertained here. Our staff continue to keep the tradition of five-star service alive, so you can rest assured that everyone in your wedding party will receive the highest levels of service.

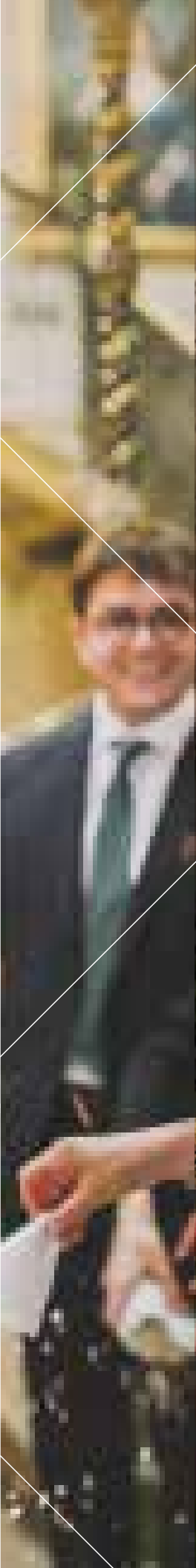








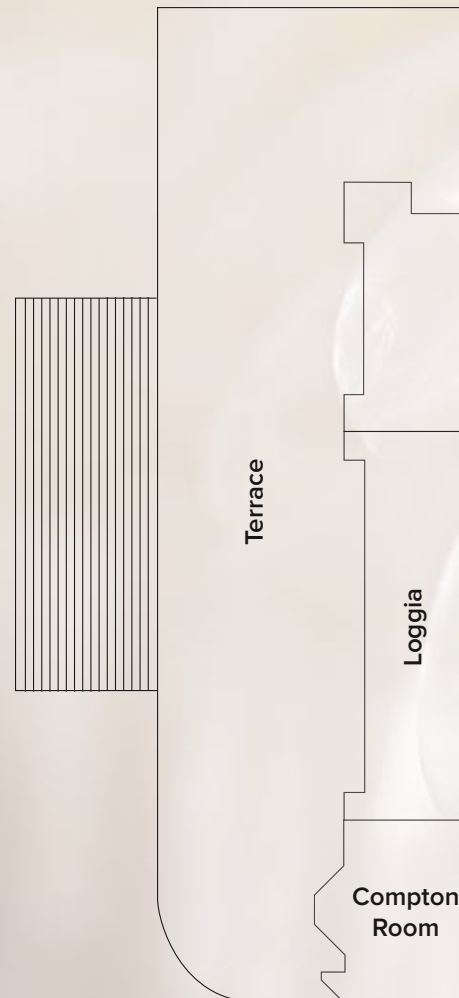




# Rooms built to impress

Our magnificent interconnecting function rooms provide the most elegant of settings for your special day, and all of them are licensed for civil ceremonies. We are confident that a combination of our historic rooms will offer you exactly what you need.

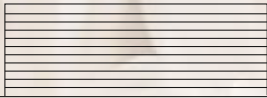
It isn't just our function rooms that will leave you lost for words. The formal gardens are equally worthy of mention, especially in the summer months when they are in full bloom. Having photos taken beside the imposing oak tree planted by Princess Victoria when she was just four years old is a fun way of capturing some of the estate's history, and guests of all ages love playing giant Jenga and croquet on the South Lawn on a sunny afternoon.





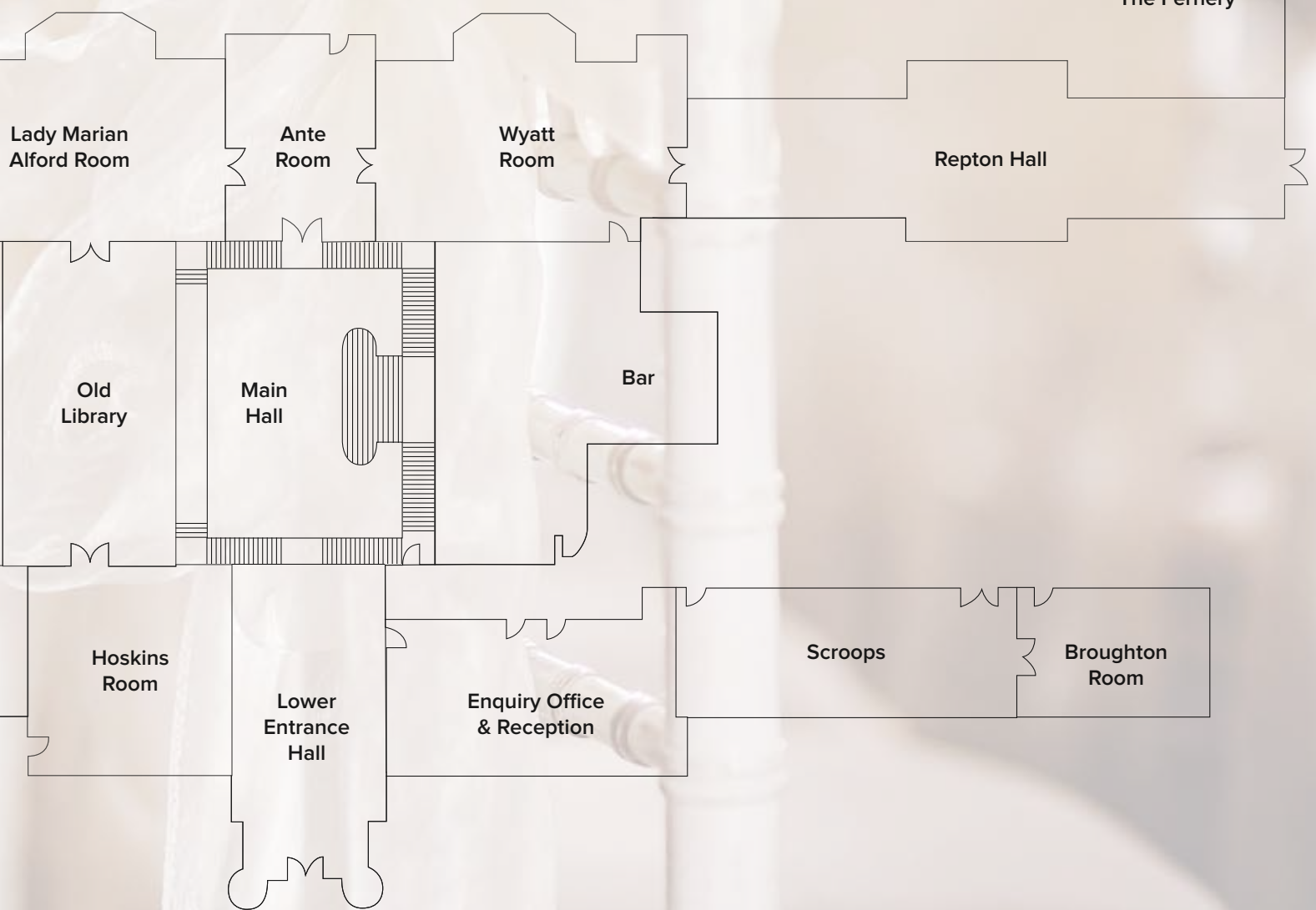


▲  
South Lawn



South Terrace

▶  
Chapel &  
The Fernery





# Rooms built to impress

## 1. The Main Hall

It is not hard to see why the stunning cantilevered staircase that majestically winds its way around the Main Hall is frequently chosen by couples as the location for their wedding ceremony. It is the obvious setting for any bride looking to make a grand entrance.

## 2. The Hoskins Room

Previously the old morning room and then a gentleman's billiards room, Hoskins contains exquisite plasterwork designed in the late 1850s. This smaller, more intimate space is ideal as a pre-wedding welcoming room.

## 3. Repton Hall

Our magnificent dining room was originally a conservatory that connected the main house with the Chapel. This grand space, which can seat 190 guests, can easily be transformed into the dining room of your dreams.

## 4. The Ante Room

As the central axis of the main house, this striking room contains three pairs of impressive English oak doors. The entwined 'A's in the carved panels of the doors represent the Christian names of the Earl and Countess of Brownlow—Adelbert and Adelaide—a couple who were happily married for 53 years. The elegant arched windows act as a perfect backdrop to display your wedding cake.

## 5. The Lady Marian Alford Room

This lavishly decorated room was the brain-child of Lady Marian Alford—a lady who spent her formative years on the continent and loved to entertain. The room was originally used as a drawing room, and boasts fluted columns of rose serpentine marble, marble fireplaces and an elaborate ceiling richly decorated in gold leaf. It can comfortably seat 100 people for a wedding breakfast and the floor to ceiling windows provide fantastic views of the South Lawn and Italian Garden.

## 6. The Wyatt Room

Formerly the dining room, this room's impressive Austrian oak panelling was introduced in 1863. The intricate plasterwork on the ceiling is based upon the design of the golden staircase in the Doge's Palace, Venice. It is rumoured that a bunch of bananas can be found overhead, but to date none of our staff have managed to spot it. A good challenge, though, to keep any children occupied!

## 7. The Old Library

Opening directly onto the South Terrace overlooking our Italian Garden, this room is a firm favourite for hosting both civil ceremonies and reception drinks. It leads onto the Loggia, which is a wonderful place for photographs thanks to its stunning blue fan vaulted ceiling and amusing plasterwork faces.

## 8. Chapel

The Chapel is often described as one of James Wyatt's architectural masterpieces. The fan vaulting and rich wood carving are reminiscent of some of England's greatest cathedrals, albeit on a slightly smaller scale. We are able to offer all couples a blessing ceremony and can help you find an organist so your entrance and exits are seriously stylish.

## 9. The Compton Room

Tucked away in the East Wing of the main house, the Compton Room was previously part of the Egerton family's private apartments. The large windows let in an abundance of natural light, making it perfect for the bridal party to get ready in. There is also a secret route from the room to the top of the staircase in the Main Hall, so no one can sneak a peek at the bride before she makes her big entrance.



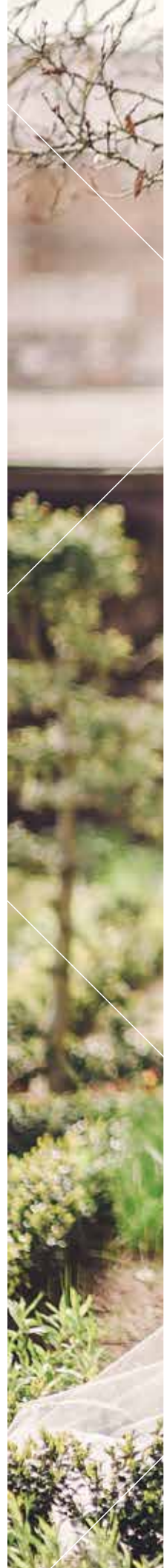


# Grounds & gardens

During the summer months the beautiful terrace, landscaped gardens and sweeping lawns provide the perfect location for outdoor ceremonies and drinks receptions. Even in the chillier months, the wonderful colours as the trees shed their leaves provide a stunning backdrop for photos.

Humphry Repton, the greatest landscape gardener of his day, was commissioned to design the formal gardens. His 'Red Book for Ashridge' was presented in 1813 and showed 15 different styles of garden including a lawn, rosary, flower garden, grotto and monks' garden. Though slightly modified, these pleasure grounds, finally completed by Sir Jeffrey Wyatville in 1823, retained the spirit of Repton's original design and remain intact today as the finest surviving example of his work.

When the estate passed to the Earl Brownlow in 1849, it was Lady Marian Alford who made the next significant developments. She created the Italian Garden and extended south into the parkland, creating an arboretum, Wellingtonia Avenue, Rhododendron Walk, a formal moat and a skating pond, as well as building a fernery on the site of the flower store. All remain to this day and have regularly been used as settings for feature films.











# A meal to remember

Our passion for fine dining has earned us an unrivalled reputation for using the very finest produce to create innovative and sumptuous wedding menus.

Our talented team of creative chefs have carefully designed a selection of delicious wedding breakfast menus. All of our menus include a vegetarian option and we can cater for any special dietary requirements. Children's menus are also available. Local farms have supplied the Ashridge kitchens with seasonal produce for centuries, and we take care to source all our ingredients from sustainable suppliers.

If you would like to invite additional guests to your evening reception, we can provide hot and cold buffets as well as BBQs. We also have an in-house wine doyen who will be more than happy to assist you with your wine and Champagne selection.



# Sample wedding menus



*Salad of smoked duck, fine frisse, warm fig tart, pomegranate dressing*  
*Warm heritage tomato and basil tart, parmesan and aged balsamico (v)*  
*Seared loin of tuna carpaccio, Asian noodle salad, soy,  
ginger and lime dressing*



*Butter poached corn fed chicken, champ potato, casserole of peas,  
baby onions and wild mushrooms*  
*Baked aubergine and Mediterranean vegetable lasagne,  
wild rocket and pesto (v)*  
*Herb crusted roast rack and rump of lamb, gratin dauphinoise potato,  
roasted beetroot, rosemary essence*  
*Roast fillet of beef, duck liver pate, rissole potato,  
roast shallot, braised baby vegetables*



*Vanilla pod crème brûlée, chocolate caramel cake  
and crispy apple nougat*  
*Passionfruit chiboust, pineapple cake with coconut ice cream and sesame tuille*  
*Ganache au chocolat with raspberry sorbet, raspberry meringue  
and chocolate sauce*

We are committed to cooking with seasonal produce from sustainable suppliers, so our menus can change.  
Please contact your Wedding Coordinator for a full list of our current menu choices and to discuss any amendments you may wish to make.

# Exceptional service

We understand that no two weddings are the same, so we have developed an extremely flexible approach to wedding coordination.

All of our wedding packages can be tailored to suit each couple's individual needs and preferences. We've had owls deliver the wedding rings, cakes cut with axes and a Toy Story inspired nerf gun competition take place in the Old Library, so we are certainly no strangers to bringing unusual requests to life.

One of our highly experienced Wedding Coordinators will look after all of your venue requirements, and will be with you every step of the way to make sure your dream wedding becomes a reality. Your Coordinator will also be there on the day to ensure that everything runs like clockwork, so that you can relax and enjoy what will certainly be one of the most memorable days of your life.





# Relax & unwind

Our 11 stylish Brownlow Lodges are the perfect place for the extended bridal party to stay. Complimentary Champagne and luxury handmade chocolates are placed in the bride and groom's room to add the finishing romantic touches.

Should your guests want to stay over after dancing the night away, we have an additional 179 ensuite bedrooms situated away from the main house so they can make the most of the beautiful countryside views. We also offer a fantastic breakfast to reinvigorate anyone who isn't a morning person. For information on twin, accessible and family friendly bedrooms, please speak to your Wedding Coordinator.

Our onsite leisure facilities provide the perfect excuse for you and your guests to escape from all the stress and hard work that has gone into planning your big day. Relax in our adult only swimming pool and enjoy our Jacuzzi, steam room and sauna. If you need energising, hit the gym, use our jogging trail and cycle paths or play a game of tennis. We offer croquet on the South Lawn as a more genteel option.





# Personalised packages

We take great pride in our ability to build your dream wedding. Please speak to your Wedding Coordinator about how we can tailor our wedding packages to suit your individual requirements.

## Rates include:

- Exclusive use of a ceremony, reception, dining and evening reception room of your choosing within the historic main house
- Exclusive use of the Compton and Ante rooms
- One glass of Prosecco or Buck's Fizz per guest as a welcome drink
- Three-course wedding breakfast followed by tea, coffee and petit fours
- Half a bottle of house wine per guest
- One glass of Prosecco per guest for toasts
- Unlimited still and sparkling mineral water
- Tables
- Chiavari chairs
- White table linen and white linen napkins
- Table plan holder
- Table number stands
- Cake stand and knife
- Wooden dance floor
- Complimentary stay in a Brownlow Lodge for the couple on their wedding night
- Preferential accommodation rates for guests
- Dedicated Wedding Coordinator
- Recommended supplier list

- Three-course wedding menu tasting for the couple
- Three months' use of the Ashridge Lifestyle Centre for the couple

## Optional extras:


- Additional function rooms on an exclusive hire basis
- Refreshments prior to the ceremony
- Canapés
- Evening buffet (required if having additional evening guests)
- Enhanced drinks options
- Enhanced menu options
- Chair covers
- Chair sashes
- A choice of firework display packages
- Private dinner and/or lunch for guests before or after the wedding
- Additional guests to attend the wedding menu tasting
- Additional nights accommodation
- A personal fitness programme
- Treatments in the Ashridge Lifestyle Centre











# Come and see for yourself

If you would like to arrange an appointment to visit Ashridge House and discuss your requirements in more detail, please do not hesitate to contact a member of our wedding team by calling 01442 841027 or sending an email to [events@ashridge.hult.edu](mailto:events@ashridge.hult.edu).

# Countdown to your perfect day

At Ashridge House we understand that planning a wedding can seem like a daunting task, so we have put together this month-by-month guide to help make organising your big day a little bit easier.

## 12 Months

- Pick a preferred wedding date
  - Decide on your budget
  - Book registrar if you wish to be formally married at Ashridge House
  - Start drawing up your guest list
- 

## 11 Months

- Decide on and book entertainment / musicians / photographer / videographer. Please speak to your Wedding Coordinator to find out more about our suppliers
  - Appoint bridesmaids, a best man and ushers
  - Check passports are still valid and start to discuss honeymoon ideas
- 

## 10 Months

- Start thinking about possible themes and colour schemes
  - Book an appointment with your chosen florist
  - Book transport if required between the ceremony and reception
  - Choose your wedding dress
- 

## 9 Months

- Book honeymoon
- Choose wedding rings
- Decide on wedding invitation design
- Decide on a wedding gift list

## 8 Months

- Finalise the guest list and send out 'Save the Date' cards
  - Arrange initial wedding dress fitting
  - Start shopping for bridesmaids' dresses
- 

## 7 Months

- Buy shoes and accessories for you and your bridesmaids
- 

## 6 Months

- Purchase or arrange suit hire for the groomsmen
  - Order bridesmaids' dresses
  - Book hairdresser and makeup artist (if required)
  - Order your wedding cake
- 

## 5 Months

- Arrange appointment with your Wedding Coordinator to discuss menus, beverages and timings for your day
  - Book any required beauty treatments at the Ashridge Lifestyle Centre
- 

## 4 Months

- Organise a hair and makeup test run

## 3 Months

- Plan your stag and hen nights
  - Arrange your complimentary wedding menu tasting session through your Wedding Coordinator
  - Arrange visas and vaccinations for your honeymoon (if required)
  - Send out your wedding invitations and be sure to include your booking reference for any bedroom reservations at Ashridge House
- 

## 2 Months

- Re-confirm timings with the church / registrars
  - Arrange final meeting with your Wedding Coordinator where final numbers, seating plans, menu choices and any dietary requirements will be confirmed
  - Finalise arrangements with the photographer / videographer, including 'must-have' photo list
  - Finalise arrangements with your entertainers and choose a first dance song. Be clear about any songs you do not wish to be played
  - Confirm order with your florist
  - Purchase any necessary thank-you gifts for parents, bridal party and each other
- 

## 1 Month

- Arrange final wedding dress fitting
- Write your vows and / or speeches
- Check honeymoon arrangements and order local currency if needed
- Collect wedding rings
- Arrange payment of Ashridge House's final invoice



### 1 Week

- Double check all arrangements are correct—make sure all suppliers have an emergency phone number to call on the day of the wedding and that they have provided their PLI / PAT testing certificates
- Start packing for your honeymoon and collect any ordered currency
- Hold a rehearsal ceremony and dinner at Ashridge House and go over the wedding timetable with the bridal party and groomsmen
- Nominate a guest to take care of the day's schedule. Make sure your Wedding Coordinator is introduced to that person on the day
- Pick up bridal outfits
- Groom to have his hair trimmed if necessary

---

### Day Before

- Have a manicure, pedicure, fake tan and any other treatments you may wish to have
- Take the table plan, name cards, disposable cameras, favours and any other additional decorations to Ashridge House
- Have an early night

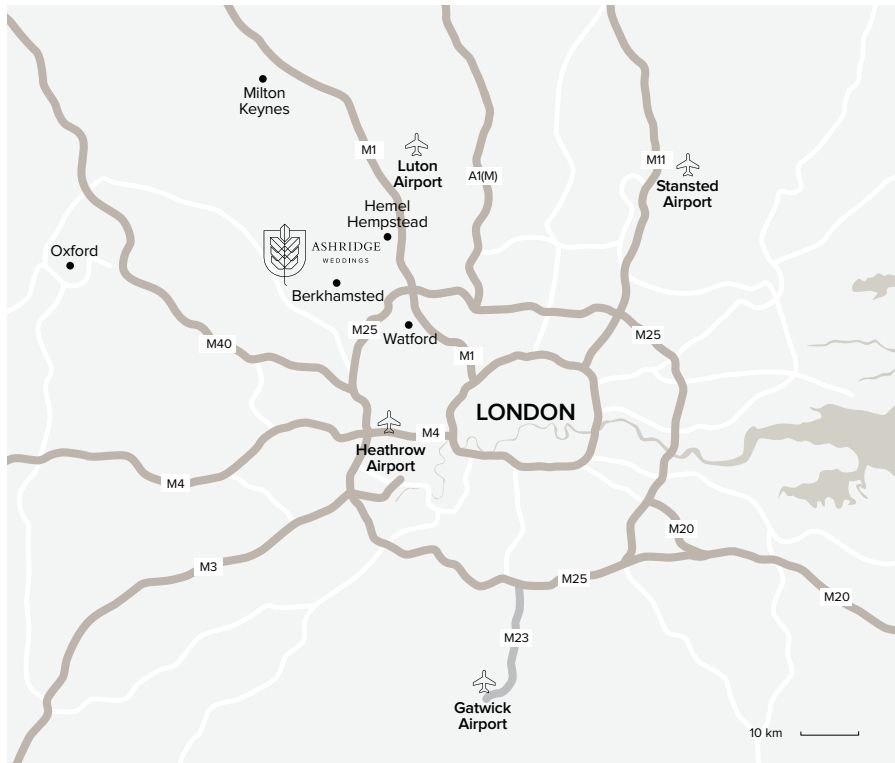
---

### Wedding Day

- Eat a good breakfast
- Give yourself plenty of time to get ready
- Give wedding rings to the best man to hold during the ceremony
- Remember to take time out for yourself during the day so you can take in everything that is happening
- Relax and enjoy it

# Find us

Ashridge House is located in the Hertfordshire countryside just four miles from Berkhamsted and 35 miles north-west of London. Unlimited open air parking is available free of charge.



## By rail

### Berkhamsted Station

Approx. 4 miles (6km) from Ashridge House

Trains from London Euston take 40 minutes

Trains from Birmingham New Street take 90 minutes



## By car

### Central London

Approx. 34 miles (56km)

### Oxford

Approx. 42 miles (68km)

### Birmingham

Approx. 92 miles (148km)



## By air

### Luton Airport

Approx. 30 mins by car

### Heathrow Airport

Approx. 60 mins by car

### Stansted Airport

Approx. 75 mins by car

### Gatwick Airport

Approx. 90 mins by car

With special thanks to the following photographers  
for allowing us to use their work:

Beau & Belle London

Julia & You

Kate Hopewell-Smith

Kris Piotrowski

Matthew Bishop Photography

Mindy Coe Photography

Modern Vintage Weddings

Sarah Elliott Photography

Steve Shipman Photography





**Ashridge House**  
Berkhamsted  
Hertfordshire  
HP4 1NS  
United Kingdom

**Please contact us if you would like  
to find out more or to arrange a visit**  
**Call** +44 (0)1442 841027  
**Email** [events@ashridge.hult.edu](mailto:events@ashridge.hult.edu)  
**Website** [ashridgehouse.org.uk/weddings](http://ashridgehouse.org.uk/weddings)



